

# LED FLOOD LIGHT SPECIFICATIONS



Product Name	LED Flood light
Product Model	PR-0104-200
Version No.	V01
Specification No.	
Date	2020.12.10

---

## Summary

---

Feature and range of application	-----page 3
Figure and size	-----page 4
Installation Guidance	-----page 5
Main parameter	-----page 6
Intensity Distribution Curve	-----page 7
Temperature test report	-----page 8
package information	-----page 9
Warranty and After-sales service	-----page 10

---

## ■ 1. character and application

This product is made of all-aluminum material, which is durable and has good heat dissipation, thus effectively prolonging the service life of the product. The installation is convenient and simple, and the installation method can be freely selected according to the use requirements. It can be installed on the lamp pole bracket, wall, ceiling, workshop, etc., and can also be directly connected to the ground or placed on the lamp placement platform with the bracket.

## ■ 2. Light source characteristics

Adopt domestic famous brand SMD-2835 light source, which has high brightness, small light attenuation and longer service life.

## ■ 3. Power supply characteristics

Adopt high-stability isolated constant current power supply scheme, it has the characteristics of over-temperature protection, wide voltage range, high power factor, high efficiency and good heat dissipation effect.

## ■ 4. Heat sink feature

Adopt high-purity aluminum radiator with high thermal conductivity. The radiator is specially designed, taking aerodynamics and hydromechanics into full consideration, maximizing the heat dissipation area and the efficiency of heat exchange with cold and hot air, so that the heat generated by the light source can be efficiently emitted and the reasonable temperature can be maintained, thus ensuring the stability of the product function and prolonging its service life.

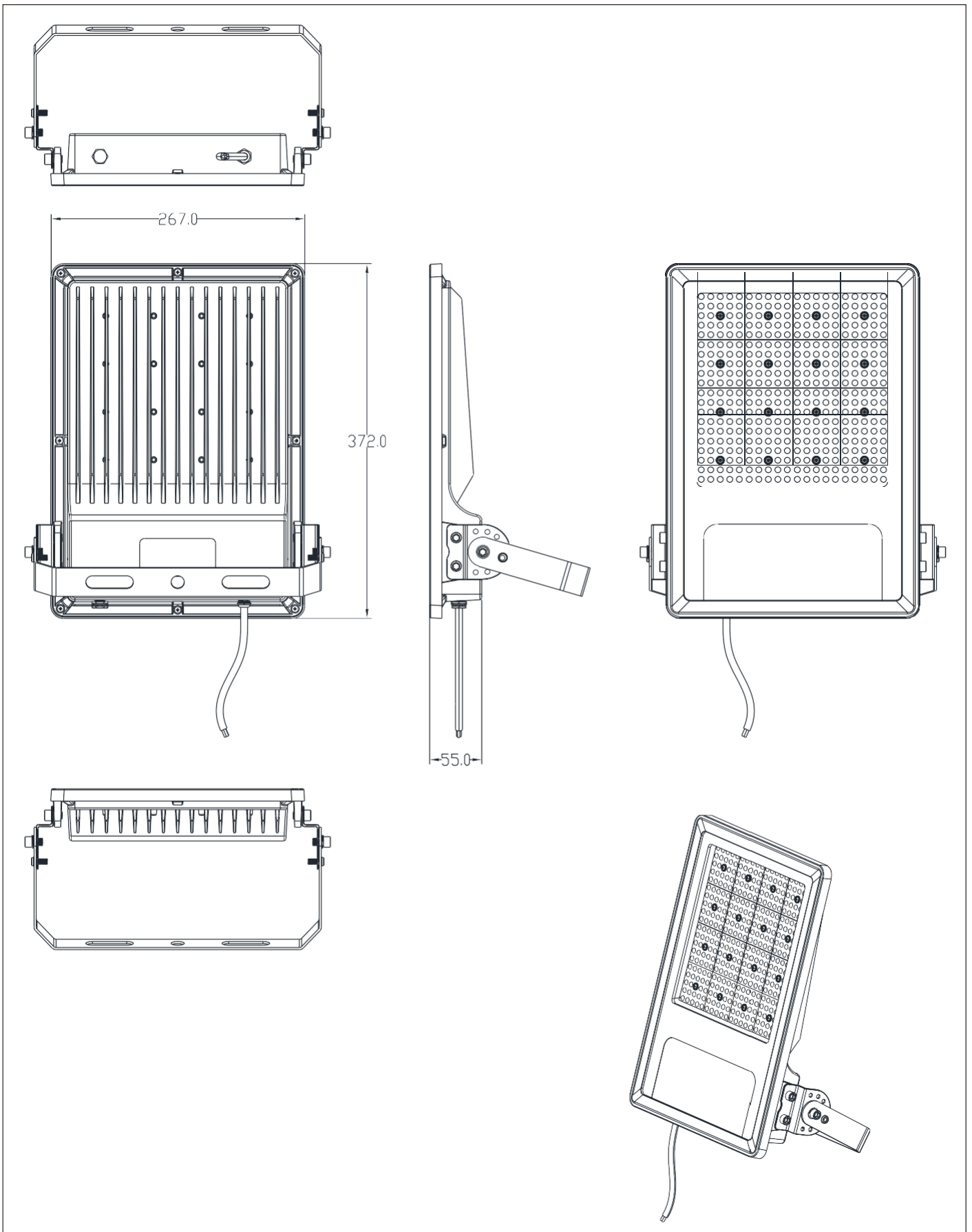
## ■ 5. Installs Way

Adopt lamp pole installation or wall installation

## ■ 6. product application

It is suitable for lighting in large and medium-sized gathering places such as stadiums, stadiums, large squares, stations, parks, parking lots, etc. It can also be installed on walls or ceilings as indoor lamps for lighting workshops, warehouses or construction teams.

Figure and size of Lamp body: 372.0mm \* 267.0 mm\*55.0mm



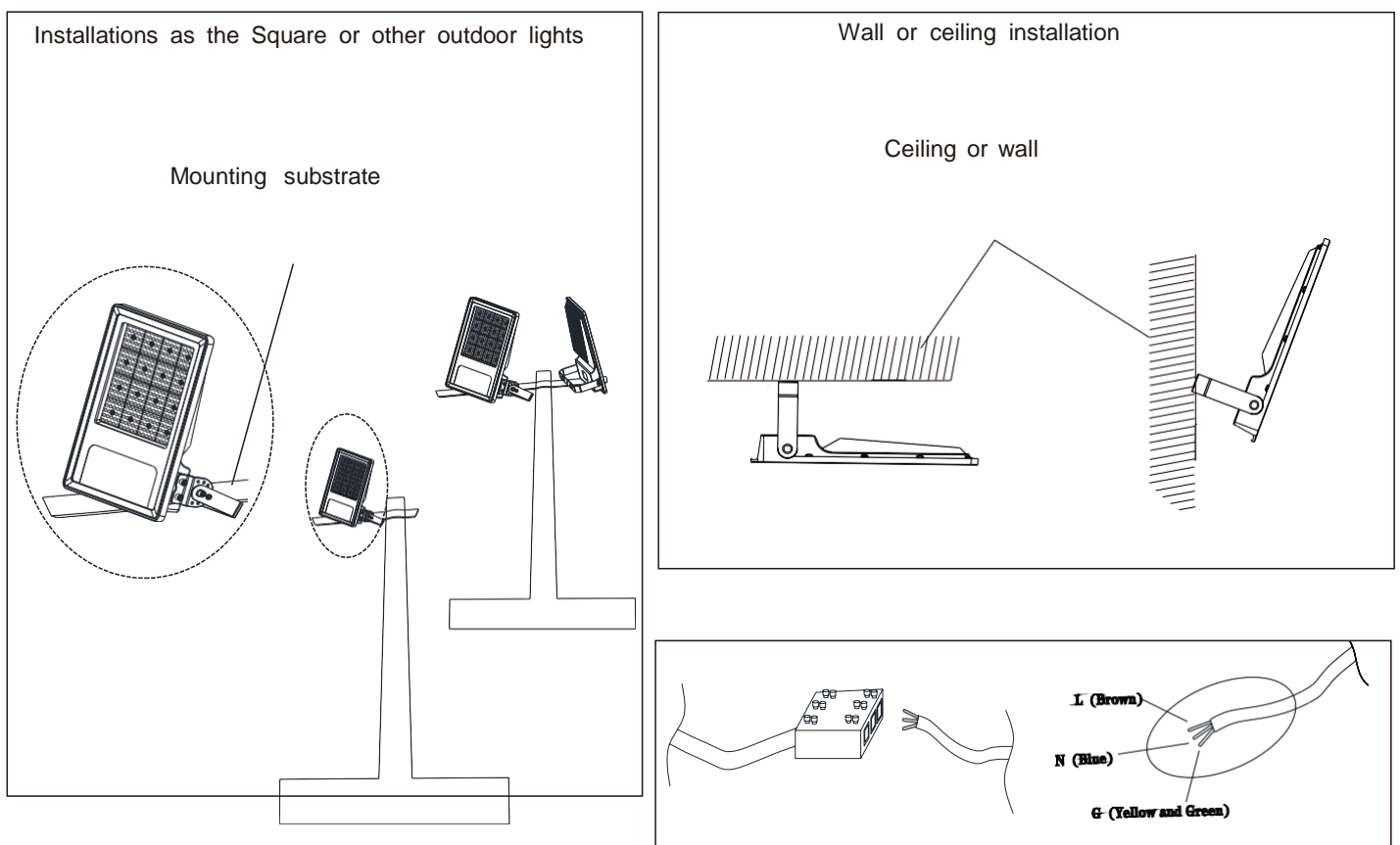
## Direction for using:

- 1.The working voltage of the product is AC100V-265V 50/60Hz. Do not exceed the working voltage range.
- 2.As the lamp is plastic PC lens which is easy to damage, please handle it with care and do not put it under heavy pressure when handling and storing.

## Installation instructions:

1. When installing lamps and lanterns, the wiring must be tightly sealed to prevent the risk of leakage and short circuit of water. Do not electrify during wiring.
- 2.When external power lines are connected, corresponding waterproof and leakage prevention measures must be taken.
- 3.It shall not violate any fire regulations when used the lamp.
- 4.Please find professional electrician for installation. The cable should be 0.75-1mm<sup>2</sup> three-core cable, the brown wire is "L" wire, the blue wire is "N" wire, and the yellow-green wire is the "PE".

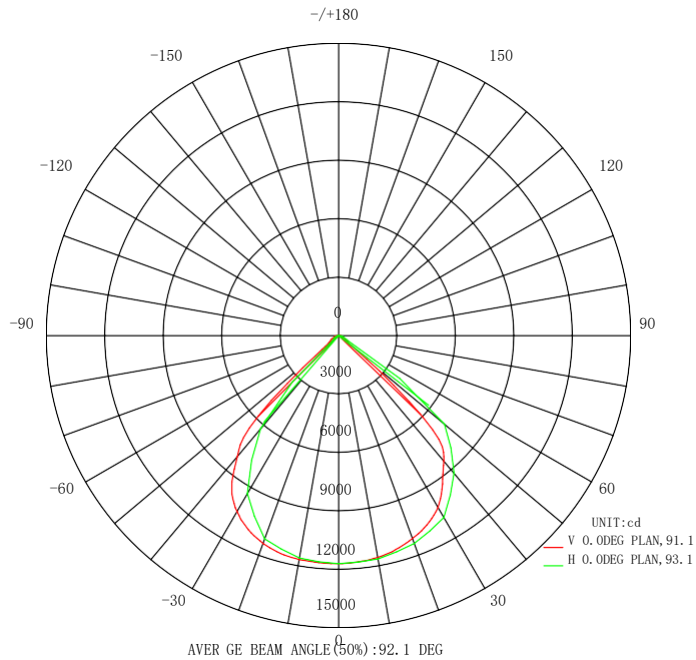
## Installation diagram :



## Main parameters

Product series	PR-0104-200
Input voltage	AC 100-265V ~ 50/60Hz
Power	200W±5%
Light effect	110 lm/W
Luminous flux	22.000 lm
light emitting diode	384pcs * SMD2835
Color temperature	6.000K
Color rendering index	Ra > 70
Color tolerance adjustment	≤15SDCM
Power factor	≥0.95
THD	≤15%
Efficiency	≥88%
Working temperature	-25°C— +40°C
Service life	30000 H
IK/IP protection level	IK08/IP65
Insulation grade	Class I
Surge protection	4KV
Installs Way	Lamp post installation or wall installation
External dimensions	372.0mm*267.0mm*55.0mm
Net weight	3.19 kg
Gross weight	3.36 kg
Size of color box	300mm*60mm*427mm
Size of Carton	380mm*310mm*445mm

# Surface of intensity distribution:



**Flux out: 17911 lm**

Height	$\bar{E}_{avg}, \bar{E}_{max}$	Angle: 91.06deg	Diameter
1m	5317, 11708lx		203.75cm
2m	1329, 2927lx		407.49cm
3m	590.8, 1301lx		611.24cm
4m	332.3, 731.8lx		814.98cm
5m	212.7, 468.3lx		1018.73cm
8m	83.08, 182.9lx		1629.96cm
10m	53.17, 117.1lx		2037.45cm
12m	36.92, 81.3lx		2444.94cm
14m	27.13, 59.7lx		2852.43cm
16m	20.77, 45.7lx		3259.92cm

Note: The Curves indicate the illuminated area and the average illumination when the luminaire is at different distance.

# Temperature test report

Product Name	position	Temperature	Ambient temperature	Temperature rise
PR-0104-200	LED junction	84.6 °C	31.4 °C	53.2 °C
	PCB	72.1 °C	31.4 °C	40.7 °C
	housing	68.2 °C	31.4 °C	36.8 °C
	Driver	66.3 °C	31.4 °C	34.9 °C

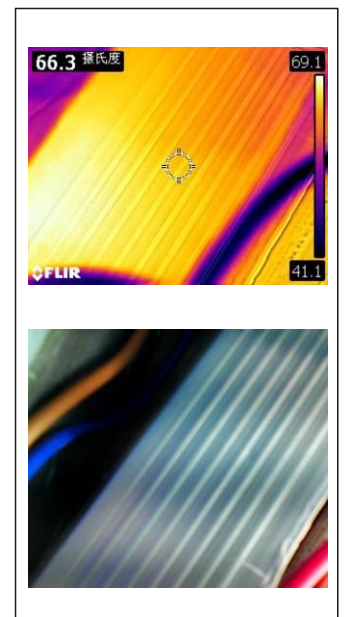
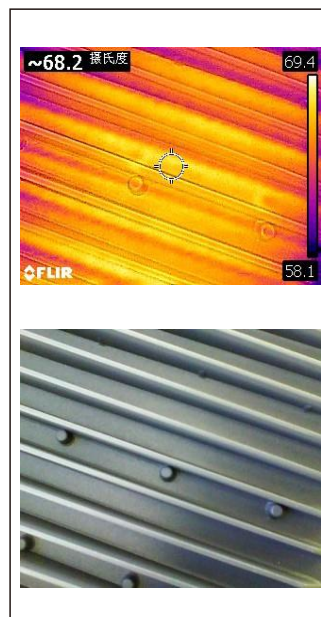
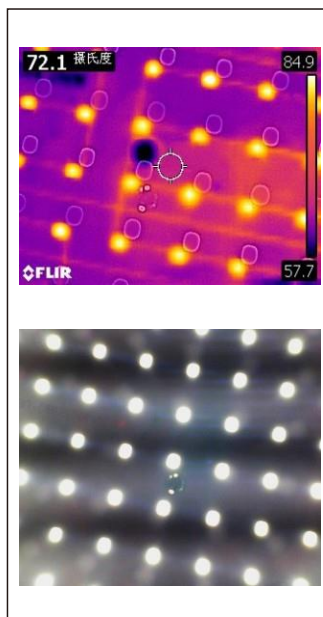
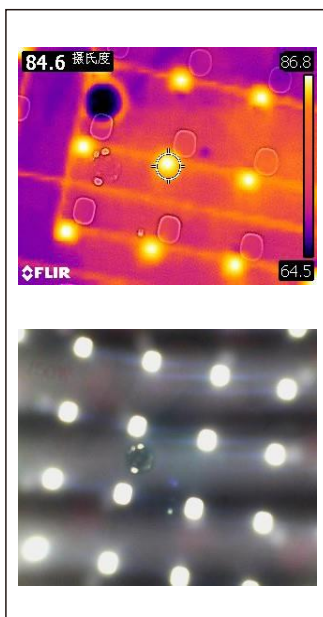
## Thermal imagery

LED junction

PCB

Housing

Driver

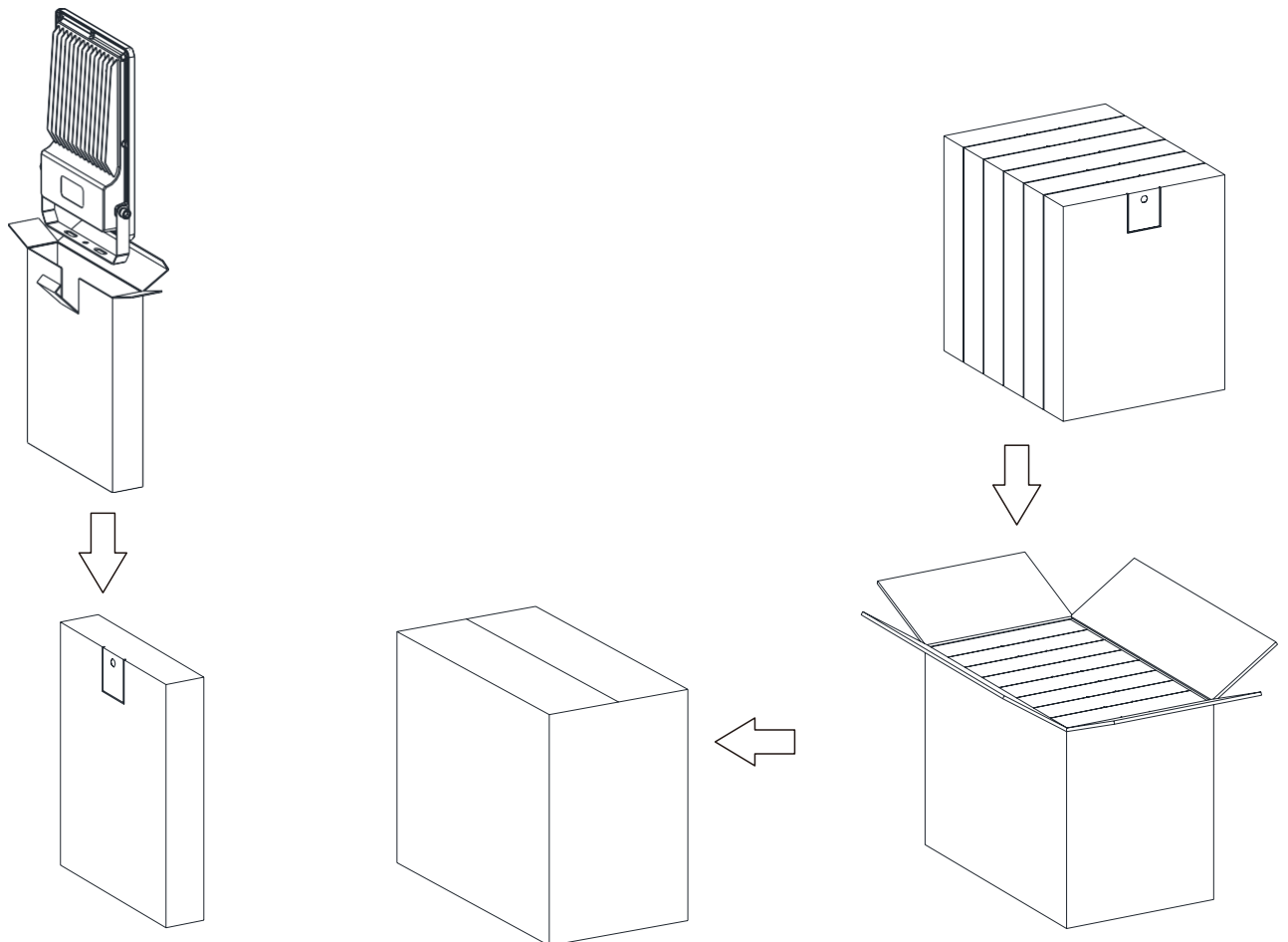




## Packing information

Product Series	PR-0104-200
Size of color box	300mm*60mm*427mm
Size of Carton	380mm*310mm*445mm
Packing quantity	6 pcs/carton
Net weight	19.14 kg
Gross weight	21.38 kg

## Packing diagram



---

## Maintenance and repair instructions:

1. Please make sure that the power has been cut off before repairing the lamp.
2. Regularly clean the glass of lamps and lanterns to keep good light transmittance of lamps and lanterns.
3. Regularly clean the dust of the outer shell of the lamp to maintain good heat dissipation performance.
4. Do not clean with water or corrosive solution, but rather with a dry rag.
5. Avoid storing and using lamps in corrosive environment or environment containing harmful substances, such as sulfide, halide and phthalate.
6. When installing and maintaining lamps, do not look directly at the light source.

## Quality assurance and after-sales service:

Under normal use conditions, quality assurance is based on the correct preservation, installation, use and maintenance of products; Product damage caused by improper installation and use and violation of product operation regulations is not within the scope of this guarantee; For the quality problems during the quality warranty period, the company will choose to repairing, repairing parts or repairing new products during the warranty period; If the warranty period exceeds, materials and labor costs will be properly charged. The product quality problems caused by natural factors and environmental factors are not covered by the warranty.